
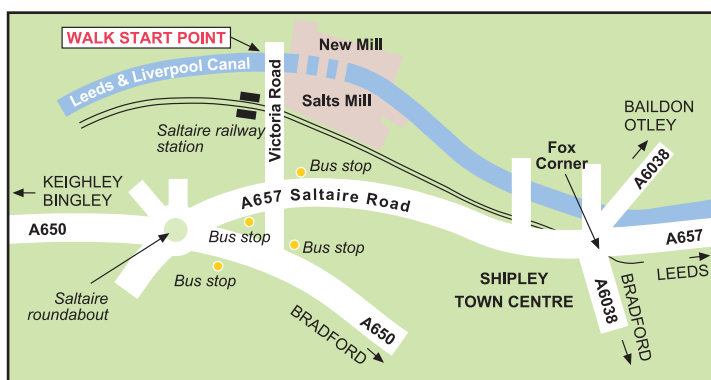


# A WALK FROM THE TOWPATH



# SALTAIRE

**A 2<sup>1</sup>/<sub>4</sub> mile (3<sup>1</sup>/<sub>2</sub> km) Circular Walk with a short cut option of 1<sup>3</sup>/<sub>4</sub> miles (2<sup>1</sup>/<sub>2</sub> km) from the Leeds & Liverpool Canal taking in Shipley Glen**



## STARTING POINT

The canal towpath at the bottom of Victoria Road, Saltaire

## HOW TO GET THERE

### By Car

Located approximately 1/4 mile (406m) off the A650 and the A657 between Shipley and Saltaire roundabout. On street parking is limited, however there is a pay and display car park.

### By Bus

Services 673, 674, 678 operate along the A657 Saltaire Road via Shipley.

Services 622, 760, 625 operate along the A650 Keighley/Bradford Road.

All bus stops are within easy walking distance of the walk starting point. Ask the driver for Victoria Road, Saltaire.

### By Rail

Direct rail service on the Airedale line to Saltaire station from Skipton, Leeds, Bradford Forster Square and intermediate stations. Saltaire station is approximately 150 yards (138m) from the walk starting point.

### By Canal

Mooring available at Saltaire Village

Due to the very nature of the countryside this walk, with hilly, rough terrain, is not suitable for the less mobile and pushchairs. Stout shoes or wellington boots are recommended along with wind and waterproof clothing. A light snack with a drink is also advisable.

**Please take care whilst walking along the canal towpath, especially with children -**

*Be SAFE - Stay Away From the Edge.*

## CUSTOMER CARE

**If you have enjoyed this walk please tell your friends, if not, or you have encountered any problems, please tell us.**

City of Bradford Metropolitan District Council  
Countryside and Rights of Way Service  
5th Floor, Jacobs Well,  
Bradford BD1 5RW

Tel: 01274 432666  
[www.bradford.gov.uk/countryside](http://www.bradford.gov.uk/countryside)  
e-mail: [crow@bradford.gov.uk](mailto:crow@bradford.gov.uk)



# JUST FOR INTEREST ALONG THE WAY



◆ **The Saltaire section of the Leeds Liverpool Canal** opened in March 1774, not reaching Leeds until 1778. For further information about the canal or other inland waterways contact British Waterways on 01977 554351.



◆ **Roberts Park** - formerly Saltaire Park opened in 1871. Within the park and situated along the promenade, a statue of Sir Titus Salt was erected in 1903 to commemorate the 100th anniversary of his birth and the 50th anniversary of the opening of Salts Mill (see photo). Sir James Roberts and Lady Roberts presented the park to the City of Bradford in January 1920 as a memorial to their late son Bertram Foster Roberts.

◆ **Shipley Glen Tramway** - built in 1895, offers a welcome lift, and for some, a nostalgic trip on the Victorian 'Toast Rack' trams. Travelling through both time and the wooded hillside of Walker Wood to the top of the hill. For further information contact: 01274 589010.

◆ **The Glen public house and cafe** - ideally situated on our walk, being at the highest point. The pub and cafe offer a wide range of food and drinks for that much needed rest and refreshment.

◆ **Bracken Hall Countryside Centre** - A short diversion from our route of approximately 273m (300yds) along Glen Road from the top of Prod Lane. This small, but significant centre offers interactive, environmental displays and local history information. For further information and opening times telephone: 01274 584140.

◆ **Walker and Trench Woodlands** - Both are semi-natural woodlands; oak, beech and holly are just a few of the wide varieties of native trees to be found. Load Pit Beck, in the valley bottom of Trench Woods makes an ideal habitat for many aquatic plants and animals. For further information about Bradford Countryside contact the Countryside Service on 01274 432666.

◆ **The Mill Dam** - Built in 1911 to supply clean water for Salts Mill dye works.



◆ **The Bird Cage** (elaborate, metal kissing gate) - Erected in 1872 as part of development of Milner Field, the home of Titus Salt which was demolished in the 1950's.

◆ **Trench Meadows** - A Site of Special Scientific Interest (SSSI) which is of national importance for nature conservation.

◆ **Hirst Wood Lock, built circa 1773** - During the heyday of the canal each lock had its own lock keeper but the coming of the railways saw a decline in canal use and the beginning of the end for the lock keeper. By 1930 even the lock keepers cottage which was sited on the other side of the canal had been demolished. The wooden lock gates were originally made at Dobson Lock workshops near Apperley Bridge, which is, to this day, an important centre for the canal.



## START & FINISH (ALLOW 1½ HOURS)

**1** With the canal behind you and ignoring the small entrances to the left and right, walk down the narrow path leading to the footbridge over the River Aire into Roberts Park.

**2** On entering the park, walk along the wide surfaced path for approximately 100yds / 91m before turning right along the side of the stone built gatehouse to exit the park through the main gateway.

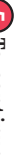
Once out of the park turn sharp left along the pavement walking in front of the gatehouse to continue by following the perimeter wall of the park as it bears left.



After approximately 250yds / 228m turn right and cross the road to join the footpath opposite down the left hand side of the grassy area heading for the Shipley Glen tramway building which can be seen ahead.

**3** At the tramway entrance, follow the path uphill through the trees of Walker Wood. (Alternatively, if the Shipley Glen tramway is open, why not have a ride to the top of the hill?).

**4** On arrival at the top, where the path meets the top entrance of the tramway, it opens onto a road (Prod Lane) for quite a distance until you reach the

Glen Public House & Cafe near the junction with Glen Road and Lucy Hall Drive.


From here a short diversion off the route to Bracken Hall Countryside Centre, with its environmental and local history exhibition is well worth a visit. Follow  on the map.

**5** To continue your walk, turn left and walk behind The Glen Public House & Cafe.  Here, you can if you wish shorten the walk by turning sharp left to go down the walled path between the large stone gate posts (rejoin the main walk at NO.8 ).

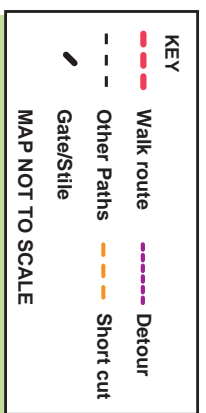
For the more adventurous continue by following the well worn path straight ahead, where, after a short distance it bears left downhill through the trees into Trench Wood.

**6** Nearing the bottom of the hill in the woodland cross over a path and continue down a short distance further to the mill dam. Here, turn left to walk across the front of the dam wall and up the track, with the fields on your left and Trench Wood to your right.

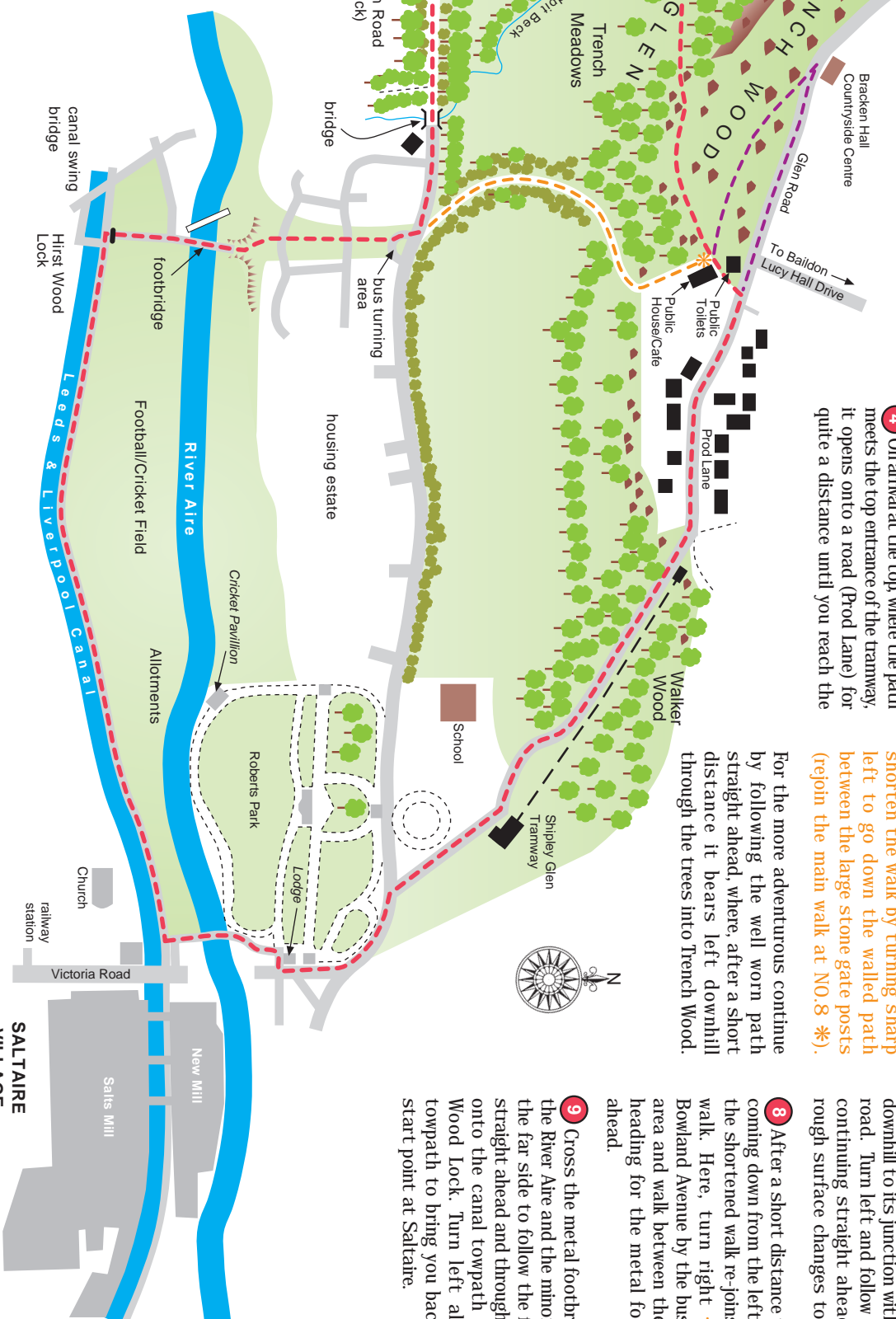
**7** On reaching a rather elaborate metal kissing gate on the left (known locally as 'the bridgeway'), go through and follow the hedge-lined track downhill to its junction with a rough road. Turn left and follow the road continuing straight ahead as the rough surface changes to tarmac.

**8** After a short distance the track coming down from the left is where the shortened walk re-joins the full walk. Here, turn right  down Bowland Avenue by the bus turning area and walk between the houses heading for the metal footbridge ahead.

**9** Cross the metal footbridge over the River Aire and the minor road on the far side to follow the footpath straight ahead and through the stile onto the canal towpath at Hirst Wood Lock. Turn left along the towpath to bring you back to the start point at Saltaire.



Every effort was made to ensure information in this leaflet was correct at the time of publication. The Countryside and Rights of Way Service accepts no responsibility for omissions or changes which may have occurred since.



SALTAIRE  
VILLAGE